

# SEEDING RANGE

McConnel's single-pass seeding technology delivers low disturbance and high performance, saving time and money, improving soil structure, and helping farmers reap the benefits of sustainable, intensive agriculture.

## STATE-OF-THE-ART SEEDING TECHNOLOGY





# SEEDAERATOR TECHNOLOGY



The McConnell Seedaerator enables farmers and contractors to reap the benefits of low disturbance drilling



“

Contour-following is an essential requirement for our new drill.”

Julian Powell, Arable Farmer,  
Nottinghamshire

The McConnell Seedaerator delivers single-pass drilling straight into previous crop residues – saving time, money and fuel while maintaining crop yields in even the most challenging weather and soil conditions.

By cultivating only the seeding zone, the Seedaerator ensures the adjoining soil structure is left undisturbed and crop residue remains on the surface. This creates perfect conditions for a living, biotic soil to thrive and delivers improvements in soil quality, aeration, water percolation and moisture retention.

The soil remains rich in nutrients and can therefore deliver consistently strong yields year on year, while single-pass operation allows you to work faster and smarter.

## KEY BENEFITS

- Low-disturbance drilling improves soil structure
- Organic matter retained near the surface creates an active biotic layer
- Cultivated seed zone promotes deep, vigorous rooting
- Reduced compaction and improved drainage
- Single-pass drilling for reduced fuel and labour costs



## SEEDAERATOR IN ACTION A STEP-BY-STEP GUIDE

**1.** Low disturbance legs work only the soil where the seed will be placed, keeping surface disturbance to a minimum.



SCAN HERE TO SEE  
THE FIVE STAGE PROCESS IN ACTION

**2.** Large pneumatic cleated tyres firm and till the soil – consolidating the soil and ensuring healthy root development.

**3.** A contour-following seed coulter places the seed in a wide band at a consistent depth for uniform even germination.

**4.** Pressure adjustable rear press wheels firm the soil for optimal seed to soil contact.

**5.** Rear harrow delivers ground pressure in a targeted and controlled manner - creating a level finish whether working pre-cultivated soil, or direct drilling into dense crop residue.





# SEEDAERATOR KEY FEATURES

## A. LEG PROFILE

Nine low-disturbance leading legs cultivate only the seed root zone, leaving the soil structure undisturbed between bands. Users can choose between **LD** Low Disturbance legs and **WL** Winged Leg designs.

- The **LD leg** is fitted as standard and designed to work to a depth of 150mm (6"). See pic A1
- The **WL leg** is designed for cultivating soil from 150mm (6") to 300mm (12") and features a replaceable winged point. See pic A2

Both leg options feature a weld-on tungsten carbide face for longevity and are fully interchangeable.

## B. HYDRAULIC AUTO-RESET

The hydraulic protection system allows the legs to break-back on contact with an obstacle and then automatically return to the working position without the need for operator input.

High ground clearance and wide leg spacings allow space through which soil and surface trash can flow easily.

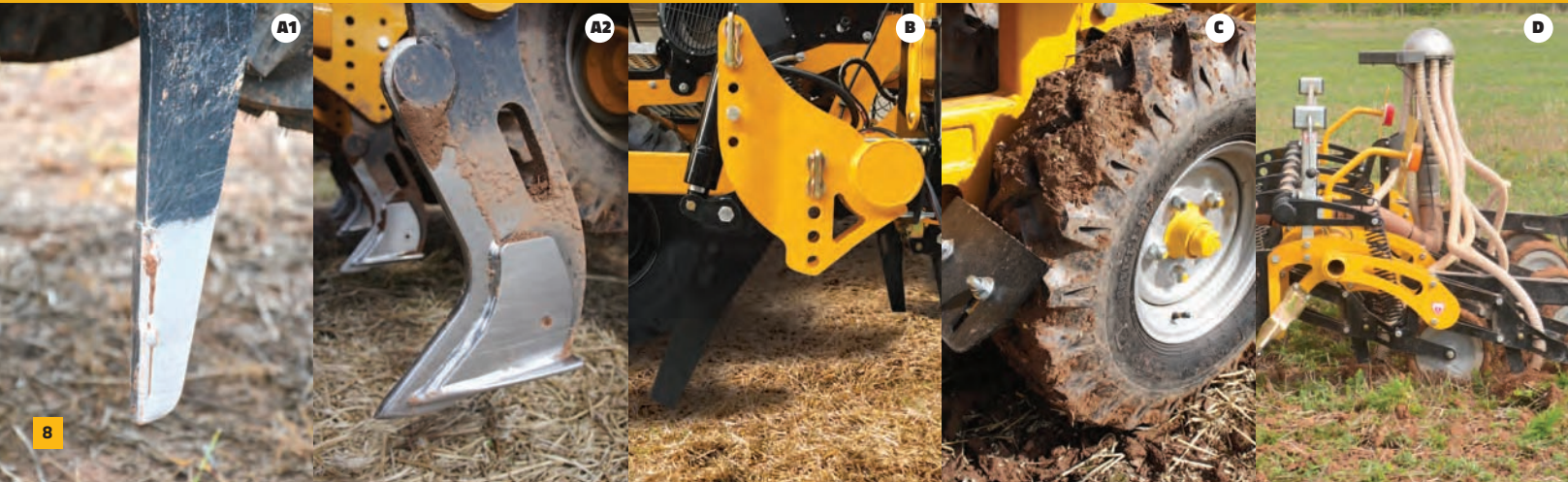
## C. PRESS WHEELS

Press wheels not only consolidate the seed zone ahead of the coulter but also ensure the weight of the machines is distributed evenly and ensures consistent leg and coulter depth for a uniform finish.

## D. SEED DISTRIBUTION SYSTEM

Designed and developed by McConnel specifically for nine coulters, the seed distribution system delivers constant seed flow from the hopper to the coulter even with large seed types at high rates.

Featuring a domed distribution head and larger diameter seed hoses, the system delivers greater consistency and uniformity of seed placement. An innovative tramline shut-off system is incorporated into the distribution head as standard.



DRILL DIRECT  
INTO STUBBLE



Companion cropping  
established with the  
Seederator



# SEEDAERATOR KEY FEATURES

**EVEN ESTABLISHMENT  
ACHIEVED WITH THE  
TWIN-SHOT COULTER**

## UNIQUE COULTER PROFILE

McConnel's coulters profile has been created as a direct result of extensive field testing in a wide variety of soil conditions. The unique profile allows soil to flow freely around the shank with minimal soil throw whilst placing the seed at an accurate depth.

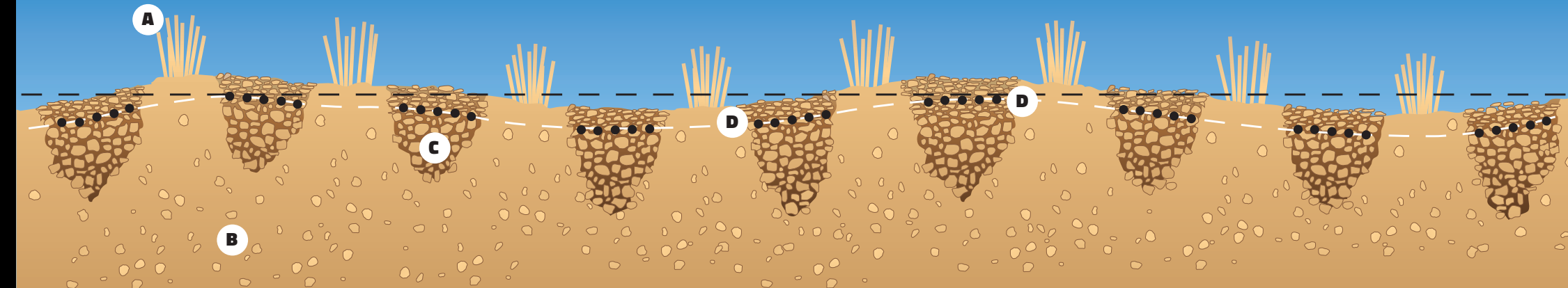
A choice of four different coulters is available.

- A 60mm **Narrow coulters** for sowing peas and beans at depths up to 150mm
- A 150mm **Standard coulters** for sowing a single band with optimal seed to soil contact
- A 170mm **Double-Shot coulters** for placing seed in two split rows
- And a 150mm **Dual Product coulters** which places fertiliser and seed within the same 150mm band



The Twin-shot coulters places seed in two split rows at the outer edge of the cultivated band – giving plants additional space to tiller to their full potential.

MANUFACTURED FROM  
10MM BORON STEEL FOR  
INCREASED DURABILITY



## CONTOUR FOLLOWING - PLACES SEEDS AT EQUAL DISTANCE FROM THE SURFACE

Parallelogram rear linkage enables +/- 100mm (4") of independent travel while keeping the coulters level with the ground for accurate seed placement which is vital for even crop establishment.

- A.** Stubble and surface residue
- B.** Undisturbed soil
- C.** Cultivated seeding zone
- D.** Consistent seed placement depth



## REAR HARROW

A choice of rear harrow configurations is available to suit a range of soil conditions and personal preferences.

The working angle and surface pressure can be easily adjusted to create a level finish whether working pre-cultivated soil, or direct drilling into dense crop residue.

LEFT: Minimal soil throw from narrow coulters shank







SEEDING  
**SEEDAERATOR 3000**

SEEDAERATOR	
MODEL	3000
Main frame	
Working width	3.0m (13' 1")
Attachment - 3pt. linkage	CAT II & III
Hydraulic auto reset protection	■
Mechanical shear-pin protection	□
1,250kg Hopper capacity	■
Road lighting and marker boards	■
Leading legs	
Leg spacing	333mm (1'1")
Working depth range	100-300mm (4"-12")
LD Low disturbance legs	■
WD Winged point legs	□
Press wheels	
9 Pneumatic, cleated press wheels	■
Coulter	
Coulter contour following	+/-100mm (4")
Coulter depth range	0-150mm (0"-6")
150mm Coulter	■
170mm Twin shot coulter	□
60mm Bean and pea coulter	□
150mm Dual product coulter	□
Features	
Tramlining	■
Adjustable rear press wheel pressure	■
9 outlet distribution head	■
Heavy duty bout markers	■
RDS metering control	■
Radar monitoring and hydraulic fan	■
Rear harrow	■
Options	
Pre emergence markers	□
Dual rear harrow	□
Twin tank, dual product module	□
Front disc module	□
Dimensions	
Machine weight*	3,900kg
Transport width	2.8m (9' 2")
Transport height	2.8m (9' 2")
Requirement	
Minimum tractor horse power	From 140hp

■ Standard Equipment   □ Optional Equipment   — Not available   \* Dependent on specification

# HIGH PERFORMANCE SEEDING

The culmination of an intensive four-year research and development programme, the Seedaerator has been created to thrive in a wide variety of soil and weather conditions.

The Seedaerator features a choice of customisation options, enabling farmers to precisely tailor their machine for peak performance.



## KEY FEATURES

- Choice of coulters
- Nine-outlet distribution head
- A single-row rear spring board harrow creates a level finish even with the optional dual harrow raised out of work



Standard Coulter

Pea and Bean Coulter



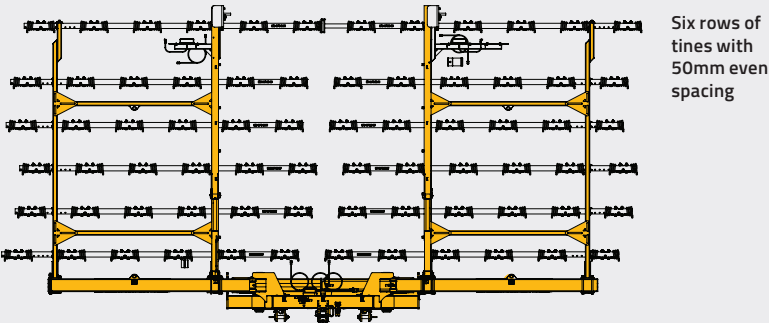


McCONNEL **RAKAERATOR**

SEEDING  
**RAKAERATOR 7400**

RAKAERATOR	
MODEL	7400
Main frame	
Working width	7.4m (24' 3")
Frame type - Hydraulic folding	2-piece frame
Attachment - 3pt. linkage	CAT II & III
Working speed	10-25kmh
Hydraulic tine adjustment	■
Road lighting kit	■
Rear marker boards	■
Tines	
Number of tine rows	6
Number of tines	144 (72 pairs)
Tine spacings	50mm (2")
14mm tine diameter	■
16mm tine diameter	□
Features	
Cushioned top-link	■
Folding rear tine bar	■
Safety transport locks	■
Dimensions	
Machine weight*	1,650kg
Transport width	2.2m (7'2")
Transport height	3.7m (12' 1")
Requirement	
Minimum tractor horse power	120hp

■ Standard Equipment   □ Optional Equipment   — Not available   \* Dependent on specification



Six rows of tines with 50mm even spacing

**FAST AND EFFECTIVE**

With its low horsepower requirements, wide working width and a working speed of up to 25 km/h, the Rakaerator is one of the most productive rakes on the market. Heavy-duty build quality and a choice of tine options ensure it's also one of the best choices in terms of reliability and customisation.

Designed to evenly distribute crop residue and destroy slug eggs, the Rakaerator creates a fine tilth 10-50mm deep - retaining soil moisture below and leaving behind a perfect environment for volunteers to germinate.



KEY FEATURES

Created for arable farmers, the 7.4m Rakaerator is the perfect complement for McConnel's low disturbance Seedaerator seed drill.

- Six rows of heavy-duty 14mm tines
- Hydraulically adjustable tine angling
- 50mm (2") uniformly spaced tines

